

Conditions Treated by PiezoWave 2

- Rotator Cuff
- Myofascial Dysfunction
- Acute & Chronic Injuries
- Scar tissue/ Adhesion
- Plantar Fasciitis
- Low Back Pain
- Trigger Points
- Neuropathy
- Neuroma
- Arthritis
- Shingles
- Bone Spurs
- Sport Injuries

Plus many more!

PiezoWave2

**Alternative Health &
Healing Center**
13240 Tamiami Trail N #204
Naples, Fl 34110

Call for Appointment
(239) 592-7767

v120622

PiezoWave2

Myofascial Acoustic Compression Therapy



First Treatment is FREE!

**Alternative Health &
Healing Center**
13240 Tamiami Trail N #204
Naples, Fl 34110

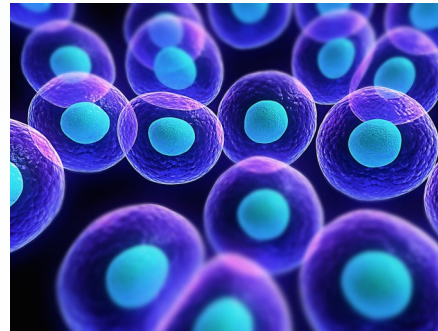
Call for Appointment
(239) 592-7767

Introducing the PiezoWave2 and Myofascial Acoustic Compression Therapy (MyACT)™ with aptitude to pinpoint the pain and treat at the source

Myofascial Acoustic Compression Therapy (MyACT) is widely used in the treatment of acute and chronic pain in muscles, tendons and joints. MyACT describes the use of acoustic waves to target tissue at varying depths to compress and manipulate tissue resulting in a focused and precise deep tissue massage. The results of the mechanical stimulus delivered by MyACT can lead to increased circulation and pain relief – key components in the healing process.

How long does treatment take?

- A typical PiezoWave2 treatment takes between 10 and 20 minutes
- Normally, 1-2 treatments per week are performed
- A total of 7-10 treatments may be necessary before lasting improvement is achieved
- With acute pain, a single session is often successful: However, to obtain lasting results it is recommended that the patient follows the treatment plan recommended by the Doctor.



What to expect during your treatment

1. Your clinician will identify the treatment site and apply a thin coat of coupling gel.
2. The clinician will start the treatment at a very low output setting and increase the power to a level that you help define and is best suited for your condition. The output level and acoustic wave frequency rate may vary from location to location based on the depth and type of tissue being treated.
3. As the clinician moves the therapy source around the treatment area, you may feel a deep, dull ache that is familiar to you as being like the feeling your condition produces. The clinician will ask you to report when you feel the ache and will adjust the output of the device to the appropriate level based on your feedback. If at anytime the treatment becomes uncomfortable, mention this to the clinician and they will adjust the output level.
4. After the treatment is completed, the coupling gel will be removed and you can return to your normal activities. You may experience some minor aches or discomfort after treatment. It is not unusual for patients to notice flushed or reddened skin around the treatment site and/ or minor soreness in some cases.